

Marriott International

A Maryland-Based Company for Over 60 Years



30
Brands



7,000+
Properties



131
Countries & Territories

Maryland Economic Impact

Source: Impact DataSource, September 2016



\$2.3B

Business activity
in year 1



Up to **\$1.8B**

For local taxing
districts over
20 years



\$89M

Construction salaries
over 2.5 years



Proposed Project

NEW **244**

Room Marriott
Hotel on site

\$600M

Total Project Cost

785K

Sq. ft. office space

3,500+

Associates based
at Marriott HQ



Less than
two blocks to
Bethesda Metro
Station

Job Creation

730,000

People around the world
wear the Marriott badge



Global Diversity & Inclusion

Ranked on DiversityInc's
"Top 10 Companies for Diversity" List

Eight Women-Led Divisions with Revenue
Greater than \$100 million

Consistently ranked on Fortune's
"100 Best Companies to Work For" List

1,346

Diverse and
Women-Owned
Open Hotels

\$5B+

Spend with Diverse
Suppliers From
2009 - 2018

Charitable Contributions



\$19.5M

Cash Contributions



1.4M

Volunteer Hours



\$21.7M

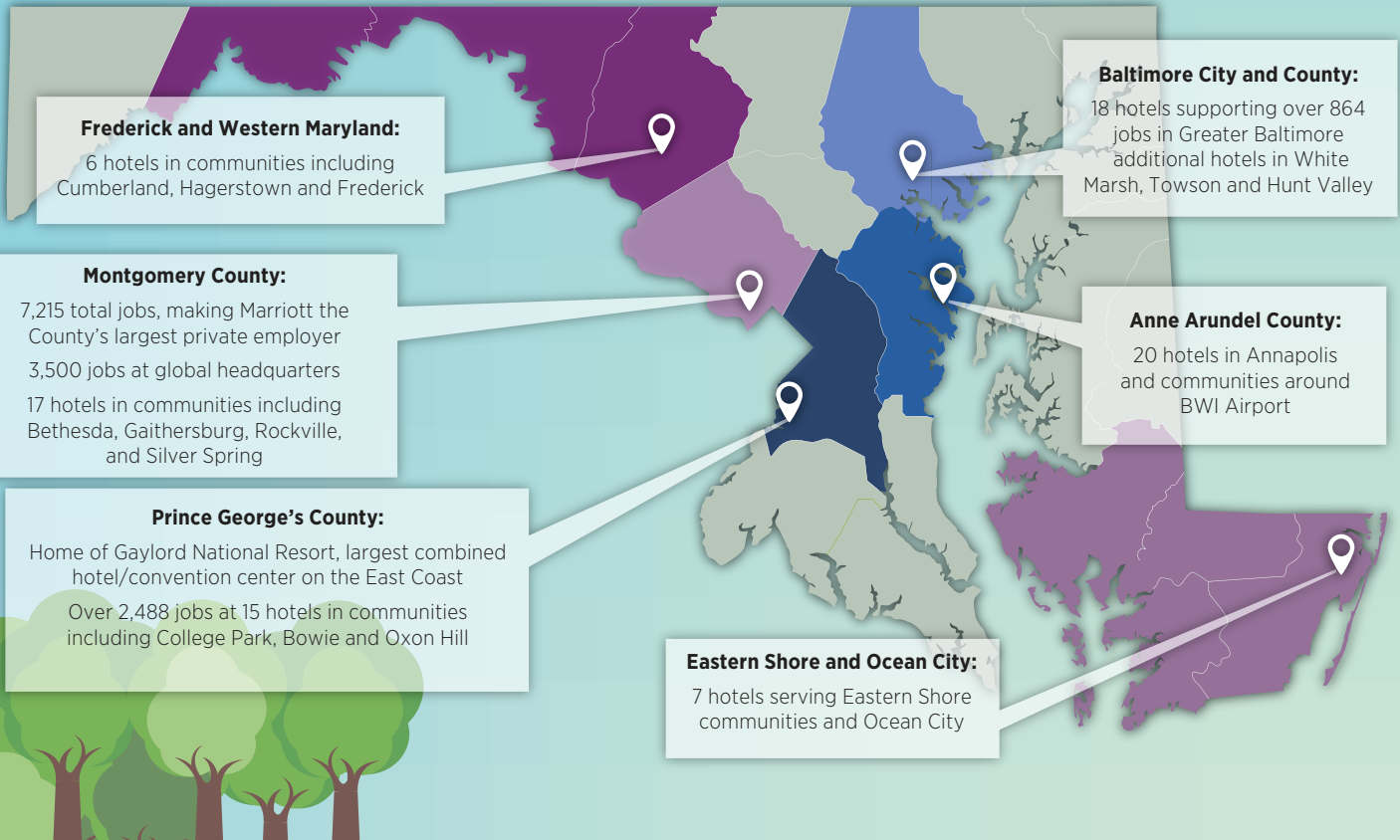
In-Kind Contributions

Marriott in Maryland

A Maryland-Based Company for Over 60 Years

Supporting Over 10,000 Jobs Statewide

Corporate HQ | 100 Hotels Statewide | 18,589 Guest Rooms



Supporting the Maryland Economy & Communities

\$1.5B

in spending with Maryland-based suppliers (2016)

\$28M

in spending with Maryland-based diverse suppliers (enterprises owned by women, persons with disabilities or minorities) (2018)

Community Partners

A Wider Circle
Bethesda Cares
Capital Area Food Bank
Chesapeake Bay Foundation
The Children's Inn at NIH
Fisher House Foundation
Habitat for Humanity Metro MD
Interfaith Works
Leadership Montgomery
Montgomery County Coalition for the Homeless
National Center for Children and Families
Rock Creek Conservancy
Shephard's Table, Inc.
The Universities at Shady Grove

BRIDGES
From School to Work

Established in 1989 by the Marriott Foundation for People with Disabilities, the Bridges from School to Work program has served over 2,220 Maryland youth with disabilities since 1990.